



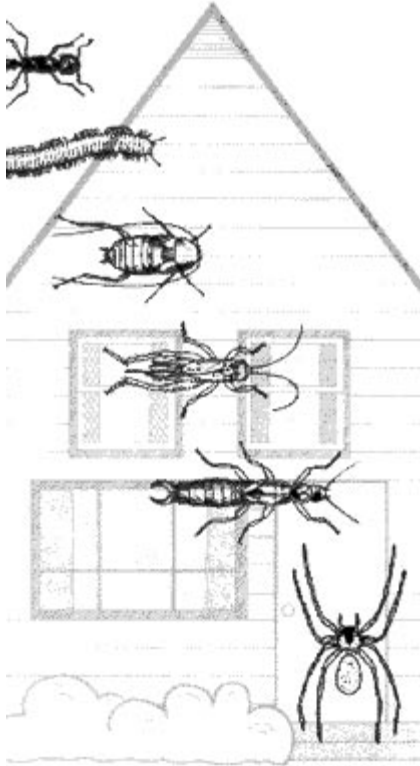
---

The following PDF was created from an HTML document on the World Wide Web and so does not look like the original printed version.

Like documents on the Web, this publication uses links to move within and between parts of the publication. Links are underlined, colored, or boxed in blue. Click on links to proceed through the document.

You may also use conventional ways of navigating this PDF, including the next page button  and article threading .

## Keep Insect Pests Out of Your House



### Introduction

### These are the Invaders

### A Five-Step Foundation Spray Program

### When to Apply

### Be Careful

### Others Can Do the Job for You

University of Illinois at Urbana-Champaign  
College of Agricultural, Consumer and Environmental Sciences  
Cooperative Extension Service in cooperation with the Illinois Natural History Survey  
Circular 1189



Ants, spiders, crickets, and other outdoor pests invade our homes as they search for food and winter protection. Once they are in the house, the homeowner must either tolerate them or use pesticides in the form of baits, dusts, or sprays.

However, because children taste-test many things, careless pesticide application, improper storage, and thoughtless placement of baits or dusts expose children to danger. If the object of a child's curiosity happens to be a pesticide, he or she may become very sick or even die.




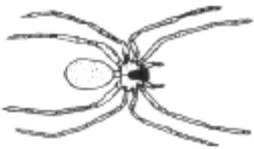


You can save yourself a great deal of worry over your child's safety by avoiding the use of pesticides in the home whenever possible. Instead, spray a barrier of diazinon on the outside foundation of the house whenever crawling insects become apparent in the house.

Diazinon is the common name for O,O-diethyl-O- (2-isopropyl-4-methyl-6-pyrimidyl) phosphorothioate. It is sold under many trade names. Check the label to make sure you have what you want.

[Return to Menu](#)

---

## These Are the Invaders

	Ants live in the soil in a colony. As workers forage for food, they may crawl up the foundations and enter our homes. You can avoid at least 95 percent of the ant problems in your home by properly using a foundation spray.
	Centipedes and millipedes feed in grass and sod areas such as lawns. In late summer and early fall these pests migrate into homes. Foundation sprays help to keep them out.
	"Waterbugs" (oriental roaches) and wood roaches may enter homes in a variety of ways. They commonly migrate into houses during warm weather. You may need to apply insecticides indoors to control waterbugs that are carried into the home in packages and boxes. But certainly you can eliminate one source of infestation invasion from outdoors--by spraying the foundation.
	Spiders also invade our homes from outdoors. Once established in a house, they are difficult to exterminate. Over a period of time, foundation sprays will gradually reduce infestations of these pests.
	Crickets abound in lawns, vacant lots, pastures, and other grassy areas. Some crawl through cracks and crevices in the foundation and into the house. Again, foundation sprays are a great help.
	Earwigs feed on dead organic material outside of the house. These nuisance pests frequently come into the house in midsummer. Foundation sprays form a barrier to these insects and keep them outside.

[Return to Menu](#)

---

## A Five-Step Foundation Spray Program

1. Purchase an emulsifiable concentration of diazinon. Dilute with water to 1/2 percent diazinon for a foundation spray. Since the average house requires about 3 gallons of finished spray, you will need 8 ounces of 25 percent diazinon concentrate in 3 gallons of water to get a 1/2 percent solution.

2. Spray the foundation just to the point of runoff. Spray all the way around the house.

3. Spray a 10- to 12-inch band of soil alongside the foundation.

4. Spray behind concrete steps and other structures that abut the foundation.

5. Apply spray to cracks and crevices in the foundation and in concrete slabs abutting the foundation.



[Return to Menu](#)

---

## When to Apply

Apply whenever crawling insects become apparent in the house. Reapply as needed, usually about once a month.

[Return to Menu](#)

---

## Be Careful

If you use a foundation spray instead of indoor applications, your home will be safer for your children and still reasonably free of outdoor pests. However, do not let carelessness rob you of the safety advantage of foundation sprays. **Always** follow these precautions.

1. Follow label directions. Read the label before you buy, use, store, or dispose of any pesticide.

2. Do not apply foundation sprays if a dug well or cistern is near the foundation.

3. Wear rubber gloves when mixing concentrates.

4. Wear a hat, shoes and socks, a long-sleeve shirt, and long pants when working with pesticides.

5. Do not eat or smoke while working with pesticides.

6. Wash with soap and water after using pesticides.

7. Store pesticides out of reach of children and irresponsible adults.

[Return to Menu](#)

---

## **Others Can Do the Job for You**

Rather than do the spraying yourself, you may prefer to hire your local exterminator to perform this service for you.

[Return to Menu](#)

---

This circular was prepared by Charles MacMonegle and Phillip Nixon, November, 1983.

The Illinois Cooperative Extension Service provides equal opportunities in programs and employment.

Issued in furtherance of Cooperative Extension Work, Acts of May 8 and June 30, 1914, in cooperation with the U.S. Department of Agriculture. DENNIS CAMPION, Interim Director, Cooperative Extension Service, College of Agricultural, Consumer and Environmental Sciences, University of Illinois at Urbana-Champaign.

---

You have reached the end of this publication.  
If you would like to review the document, click  
on the ◀, ◀◀, or ◀◀◀ buttons.

To return to the main list of publication cat-  
egories, click on the button to the right.

**publication  
categories**

3